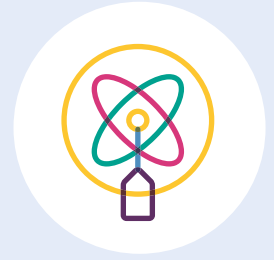


Funding for research – Guidance and Frequently Asked Questions



If the cost of your research project is less than £5,000, please apply to Funding for Research under £5,000. If it is over £5,000, please follow the process for Grants over £5,000 and submit an Expression of Interest.

What type of research is the Charity looking to fund?

The Charity would like to support research applications that:

- Meet patient needs
- Develop researchers of the future
- Improve research and innovation infrastructure.

We would recommend your application meets one or more of the following criteria:

- Address a clear need and translate into patient benefit within 5–7 years.
- Focus on areas which are facing challenges: cardiovascular, cancer, mental health, respiratory, neurological conditions as well as research which seeks to address health inequalities
- Align with Sheffield's areas of tertiary care, specialisms and/or areas which have the potential to become Centres of Excellence
- Be likely to secure future NIHR funding, or equivalent
- Promote innovation via collaboration with partners, including universities and industry to accelerate the translation of research into practice
- Encourage widening participation in research from across the workforce and / or patients
- Support research infrastructure to build capacity that positively impacts our NHS Trusts

What type of research applications would the Charity likely not fund?

Research studies falling under one or more of the following:

- o Only ancillary costs. For example, we will not fund consumables, travel expenses, or publication costs of research that we have not funded.
- o Primarily supporting academic outcomes. For example, where publications and academic or career progression is the principal outcome or measure of success.
- o Commercial profit is a primary rather than ancillary benefit
- o Dependence on the Charity's funding. There is over reliance on SHC charitable funding to support research. we expect that over the duration of our funding, that the infrastructure is built to enable sustainability.
- o Better placed funders. Sheffield Hospitals Charity's funding available is low in relation to many other research and innovation funders, therefore every effort must be made to secure other external funding, where available.
- o Projects previously not supported. Projects which have failed to secure funding from us in a previous funding call or application.

I am unsure about the Funds I could utilise. How can I find out more?

Our Grants Team can assist you with identifying the Funds available to your Directorate, understand the Fund Objectives and contact the Fund Champions.

I have contacted the Fund Champions, but I have not received an answer. What should I do?

Please inform the Grants Team that you are having difficulties of getting hold of Fund Champions.

I don't have a quote or a clear breakdown of the costs to provide with my application.

If you have not provided a quote or a costs breakdown, this will delay the review of your application. Please make sure your application is complete when you apply.

What happens once I have completed an application?

Our Grants Team will review your application. If we are not clear about some elements or need further information, we will contact you. If all the necessary information has been provided, we will notify you of the outcome of your application.

What happens if I am awarded funding?

We will need you to complete and sign a Grant Acceptance Form. We will also advise on how to order items and what your Finance Lead should do.

Do I need to keep you updated on what happens with my project?

We will ask you to notify us that things have progressed well. For instance, the item you wanted to purchase has been delivered or the room has been renovated.

If your project is more substantial, at the time of awarding the grant we will inform of what type of evaluation we would want to receive: this could consist of images, quotes from users or a brief report. Evaluations help us understand how far funding goes in supporting patients and staff.